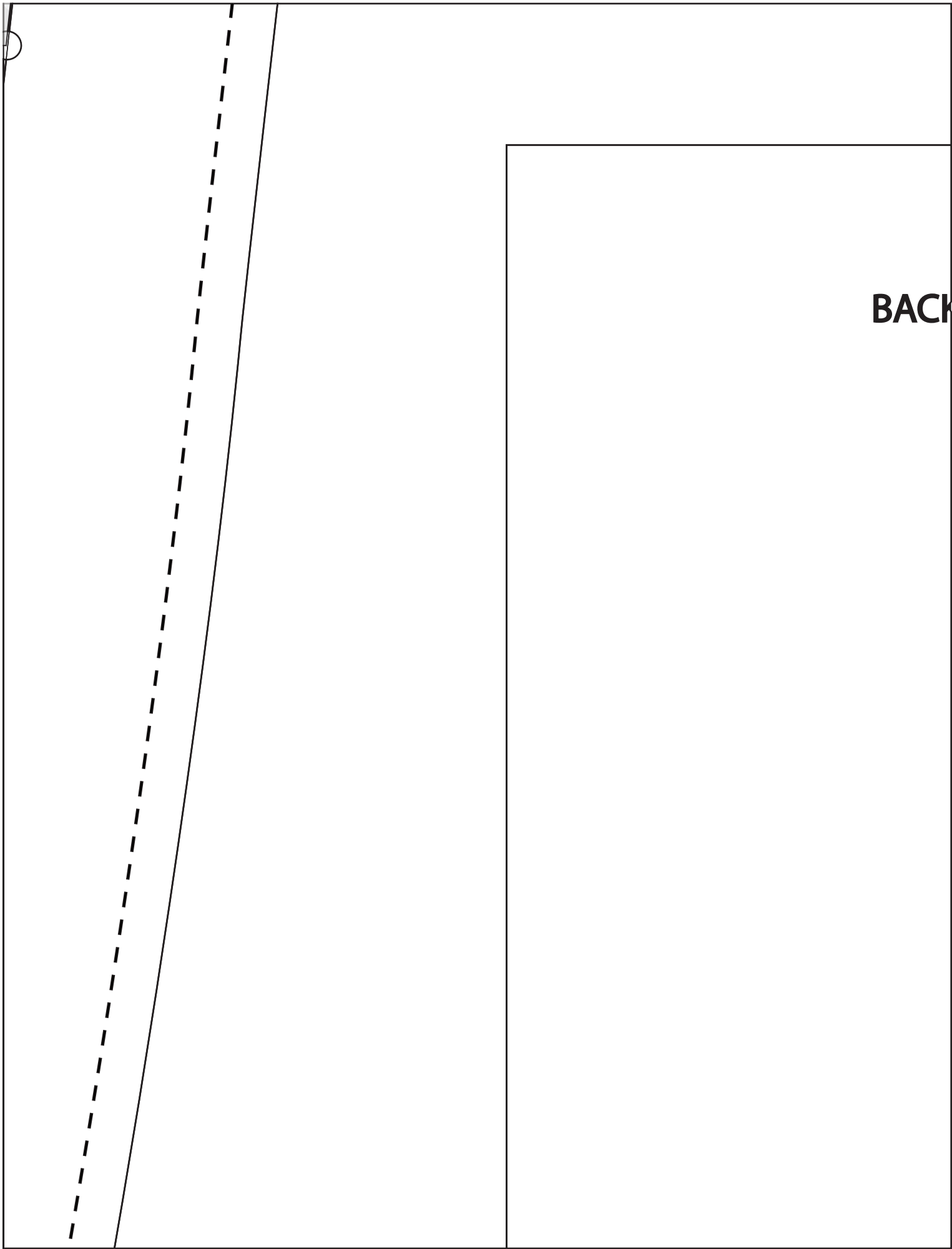


BACK

WELT POCKET
PLACEMENT GUIDE

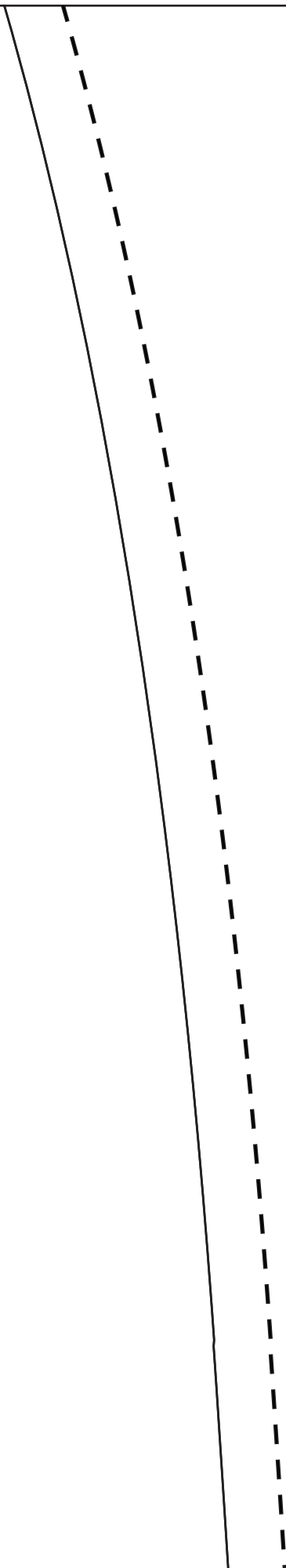
**END OF POCKET BAG
MARKINGS**

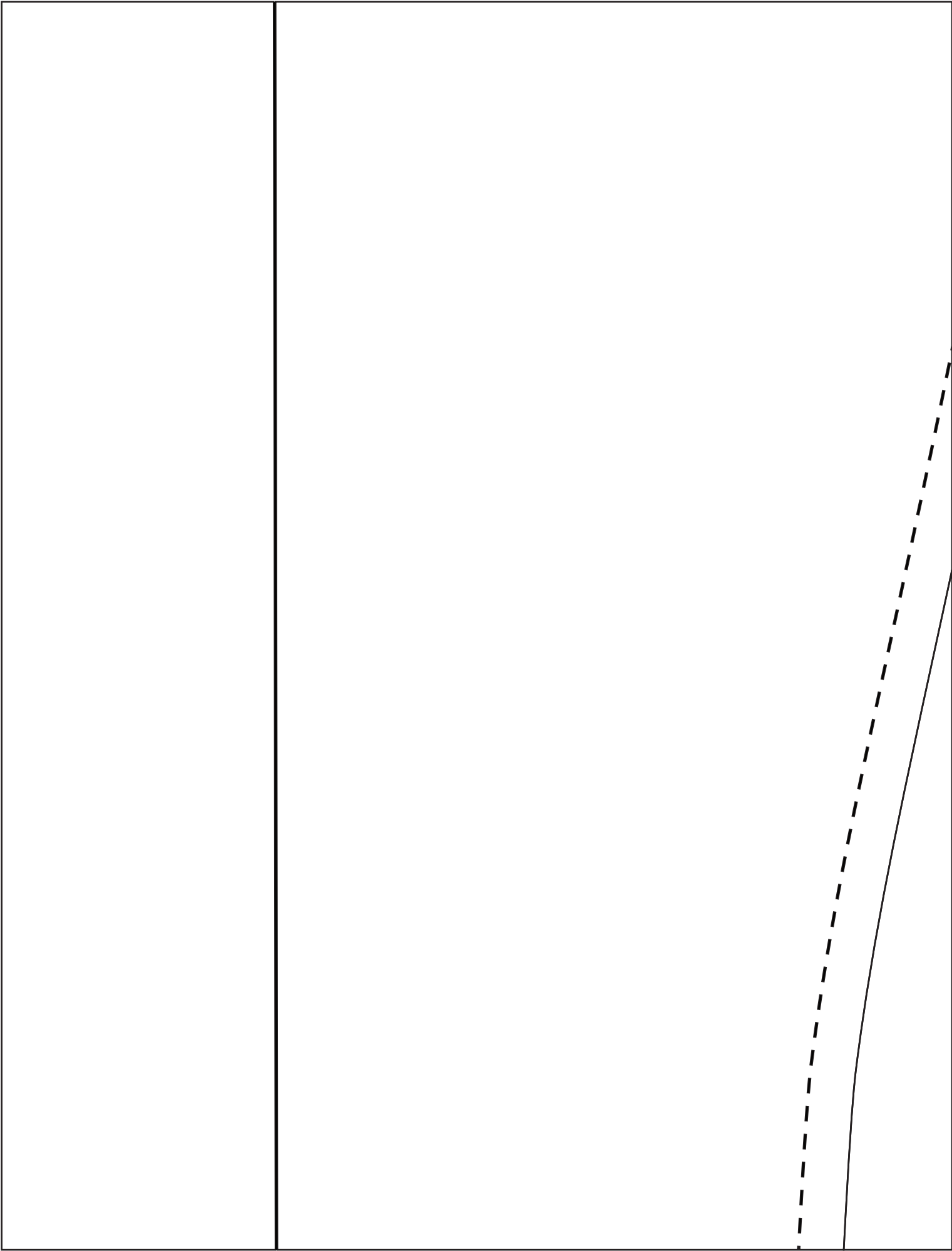




BACK

CUT 2





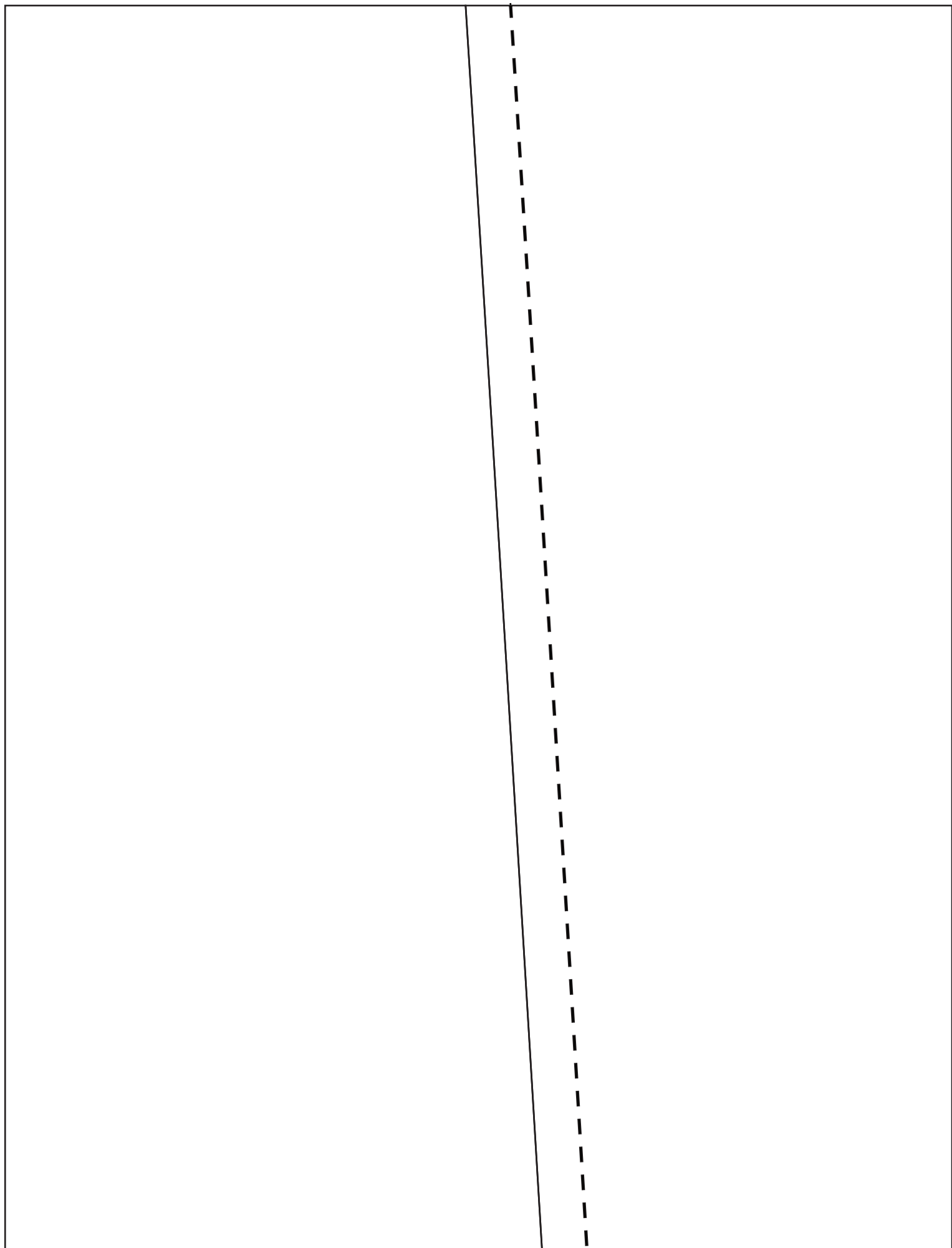


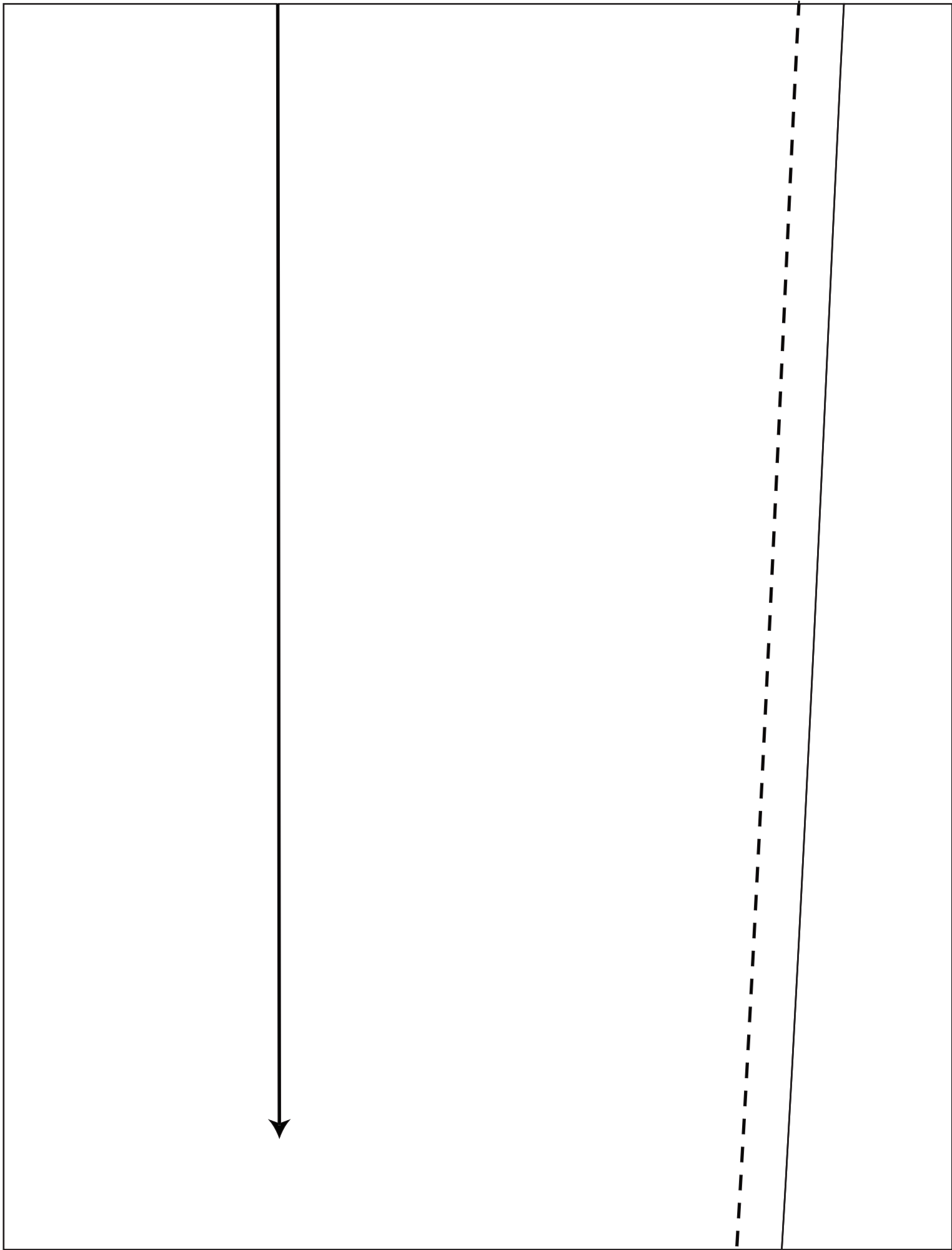
The diagram shows a pattern layout on a rectangular sheet. On the left, a vertical dashed line and a diagonal solid line define a triangular area. In the center, a large rectangular piece is labeled 'FAUX FLY INTERFACING CUT 1'. At the bottom left, a smaller rectangular piece is labeled 'SIDE ZIPPER SHIELDS' and has a horizontal dashed line near its top edge. On the right, a large rectangular area is defined by a solid line, with four short horizontal dashed lines at its top edge.

**FAUX
FLY
INTERFACING**

CUT 1

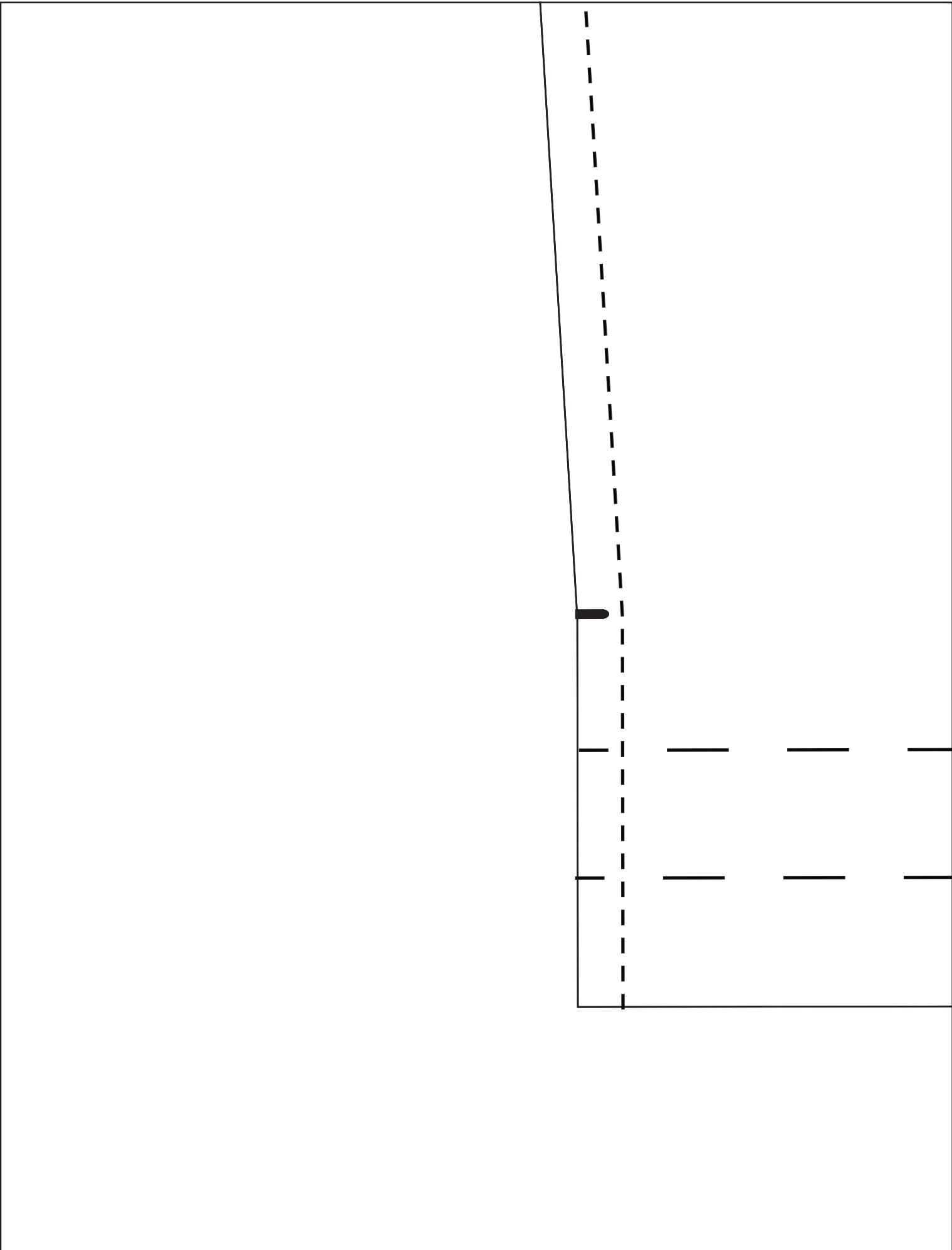
**SIDE
ZIPPER
SHIELDS**

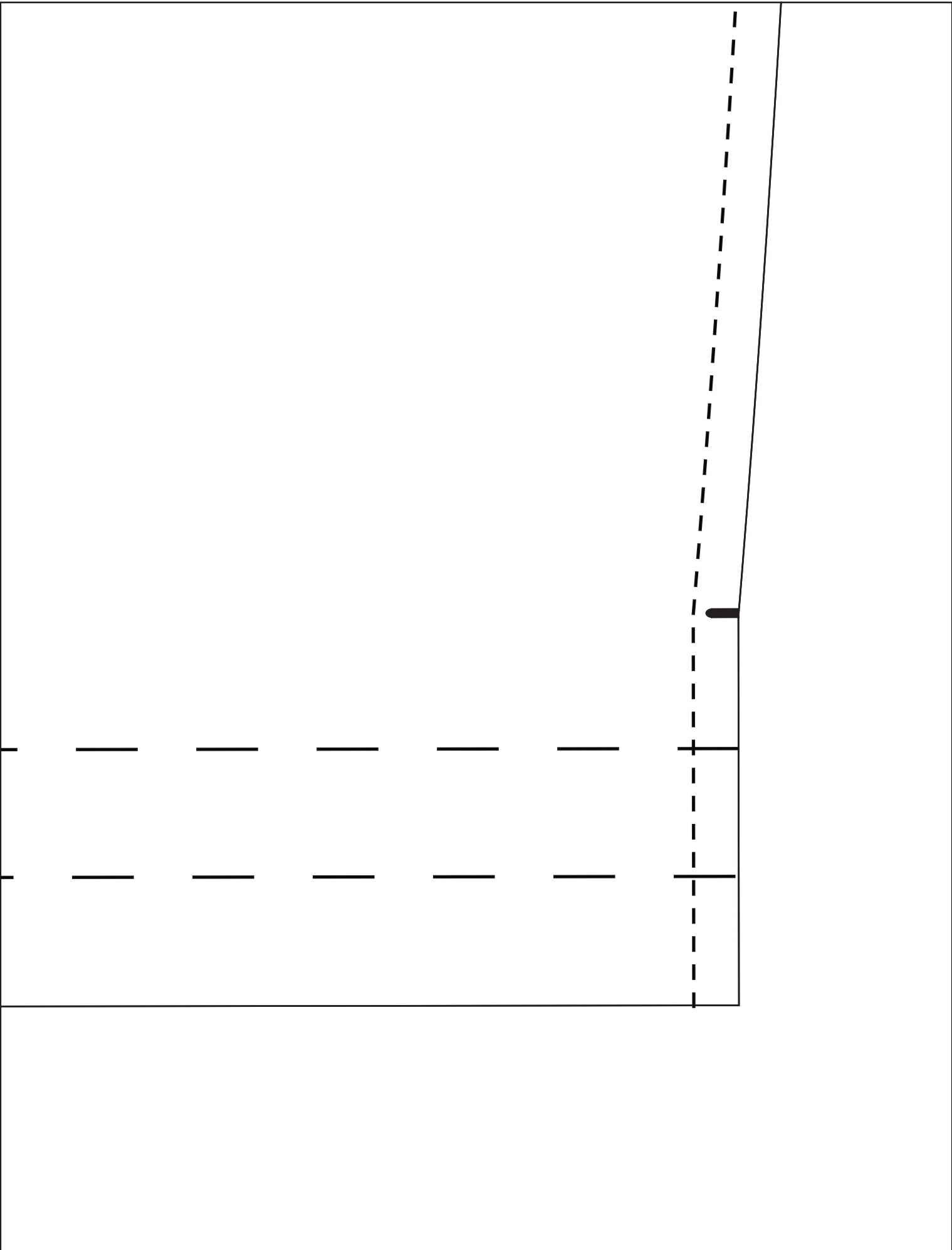


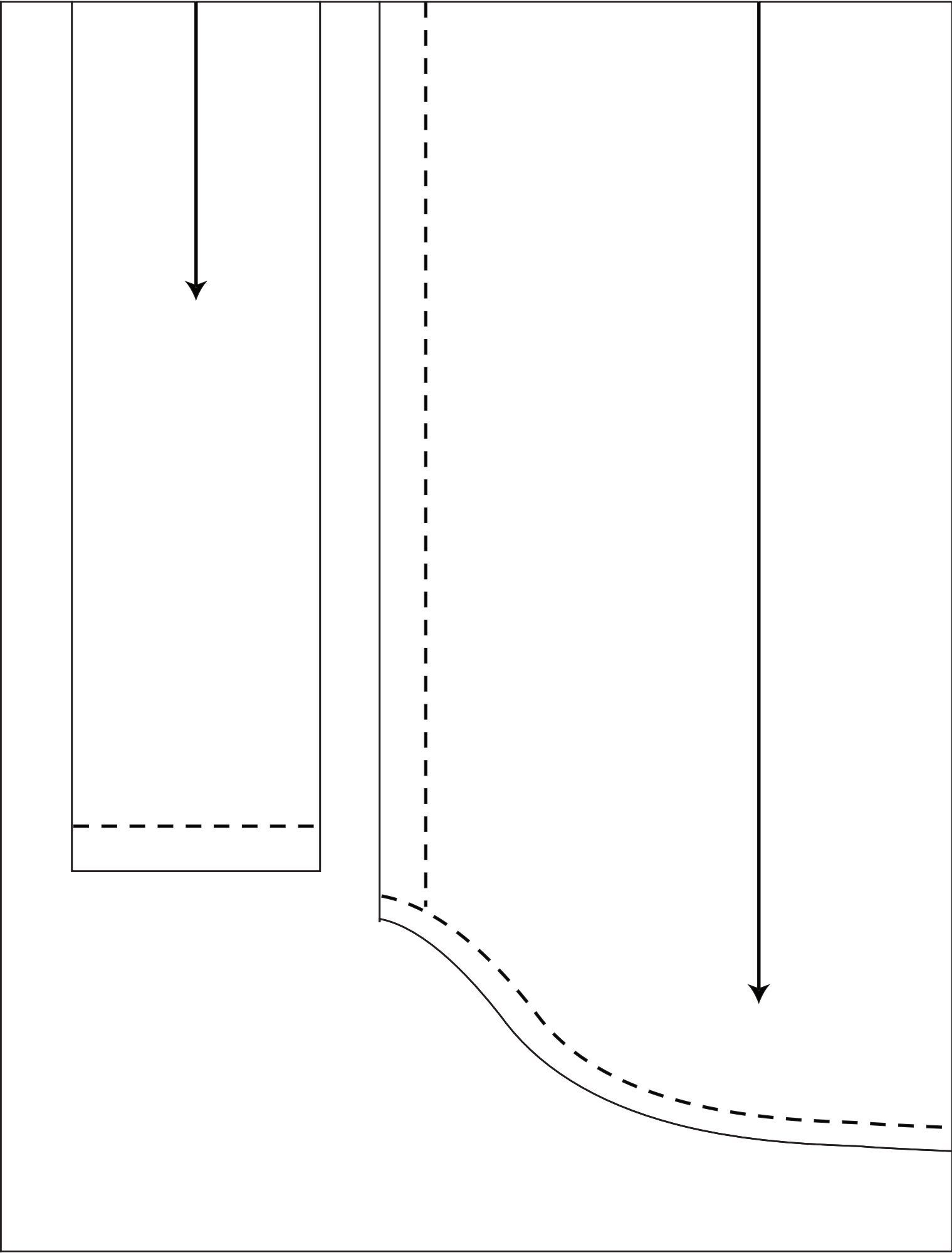


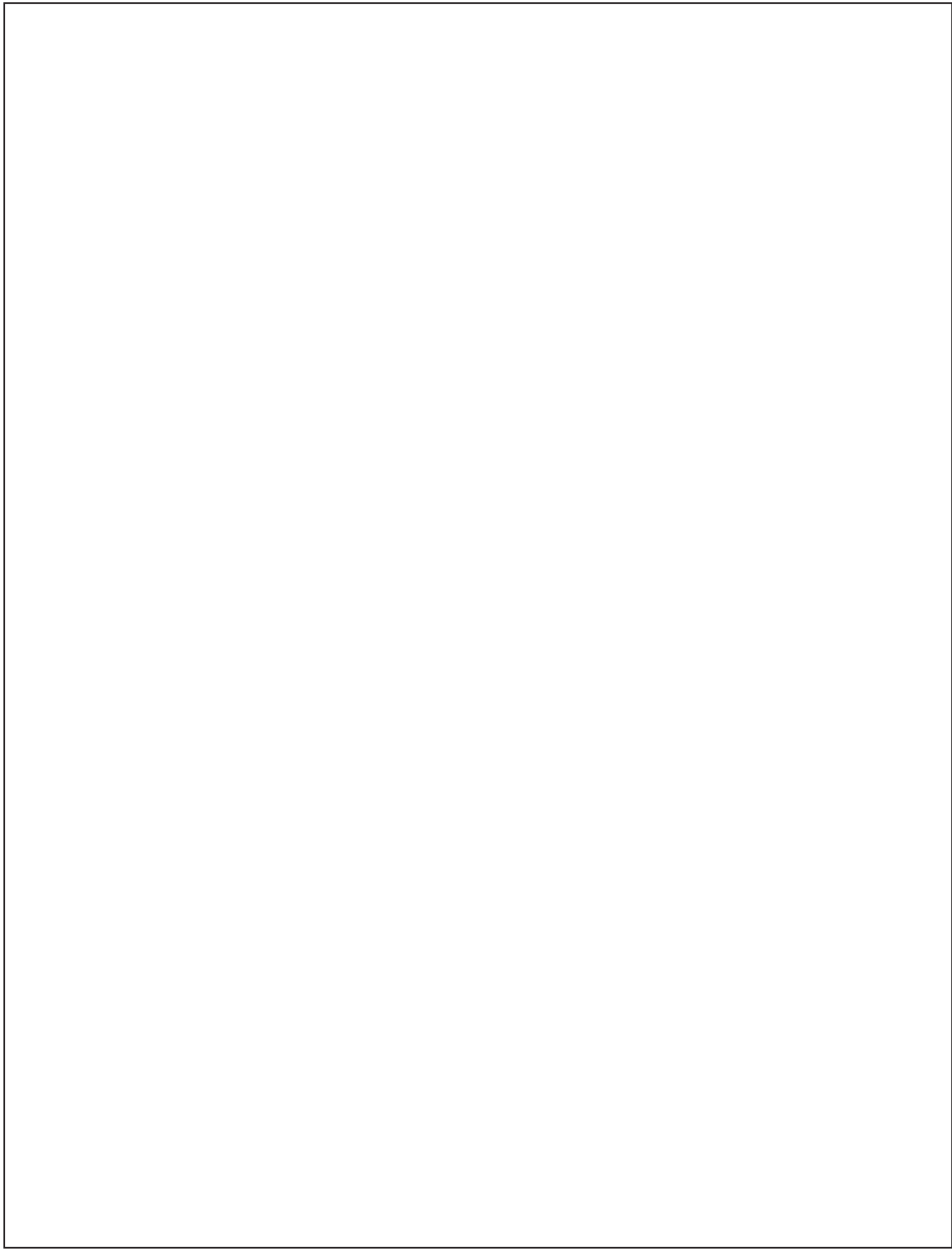
CUT 2

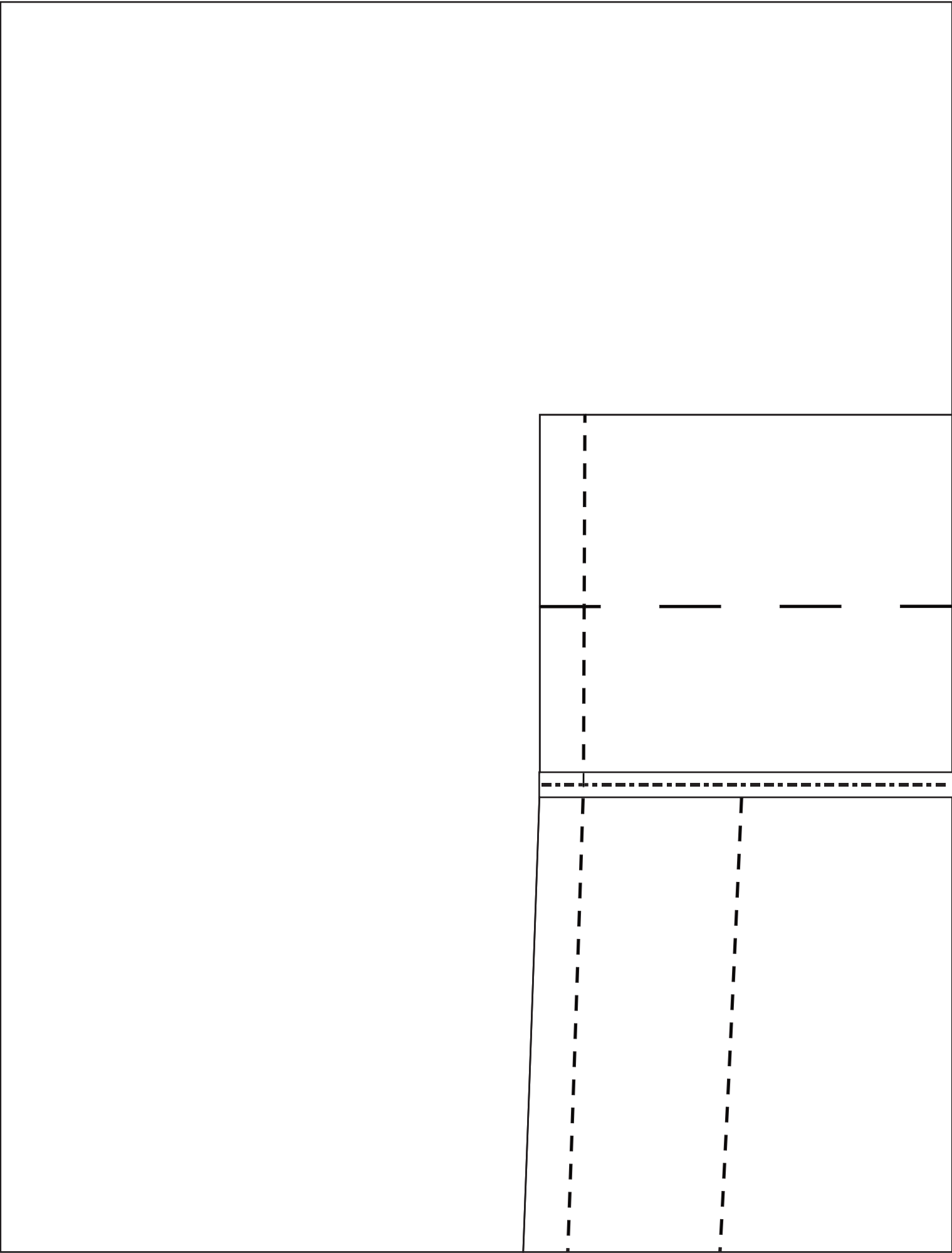


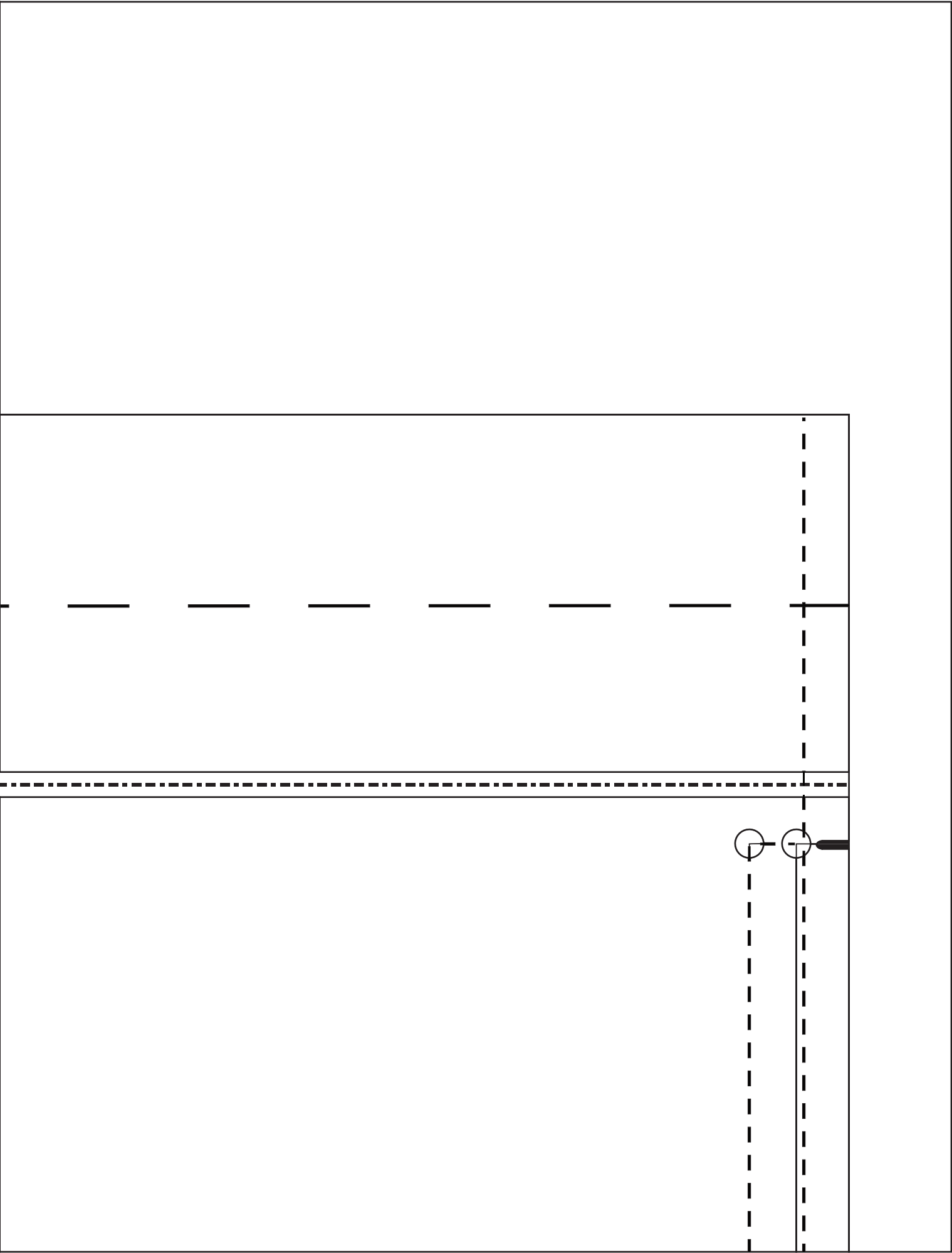








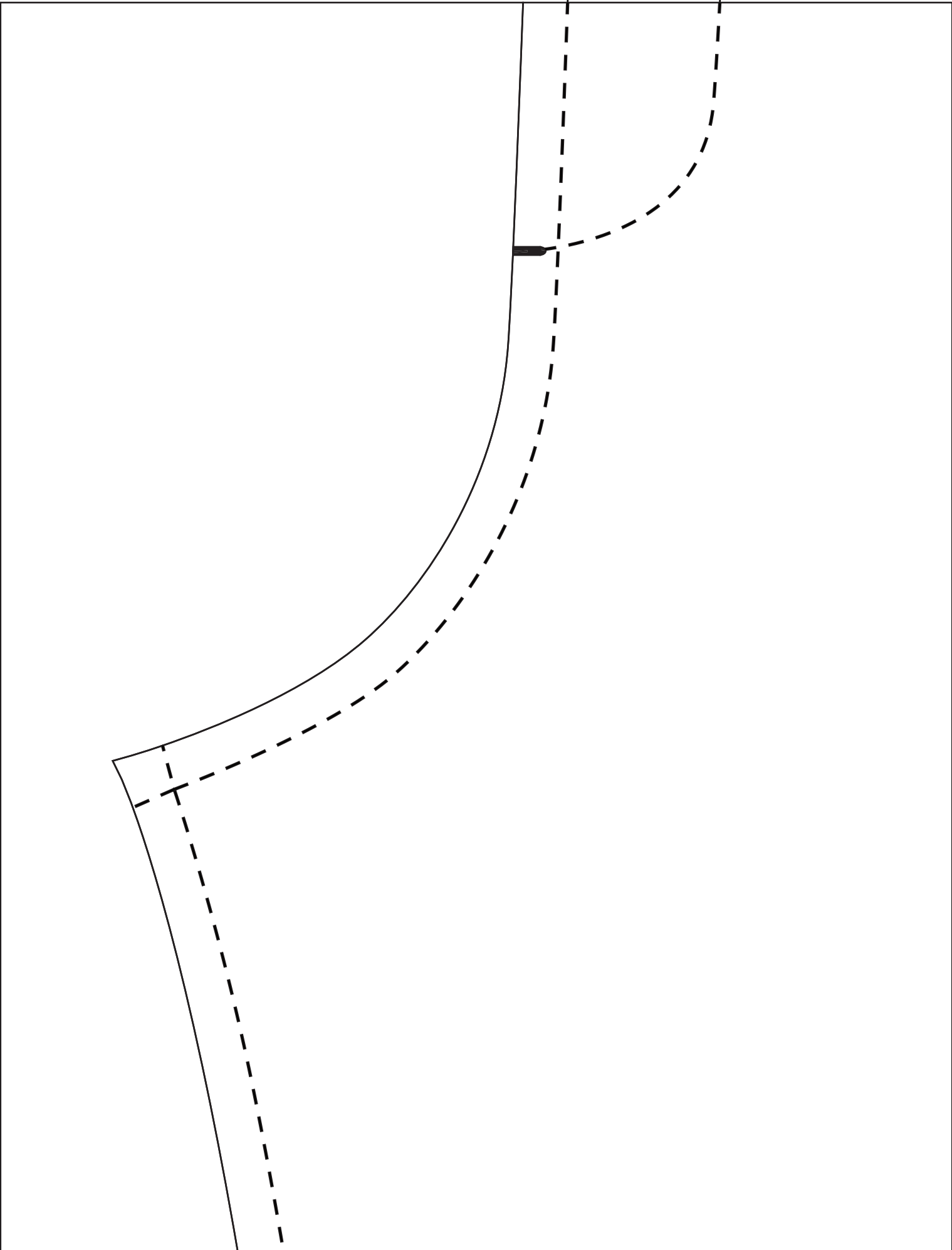




**K WELT POCKET
BAG**

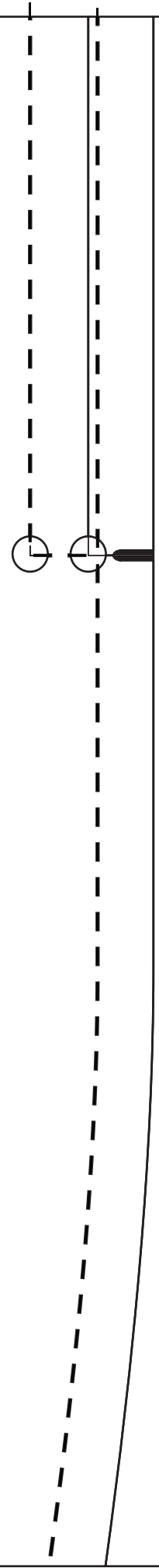
CUT 2

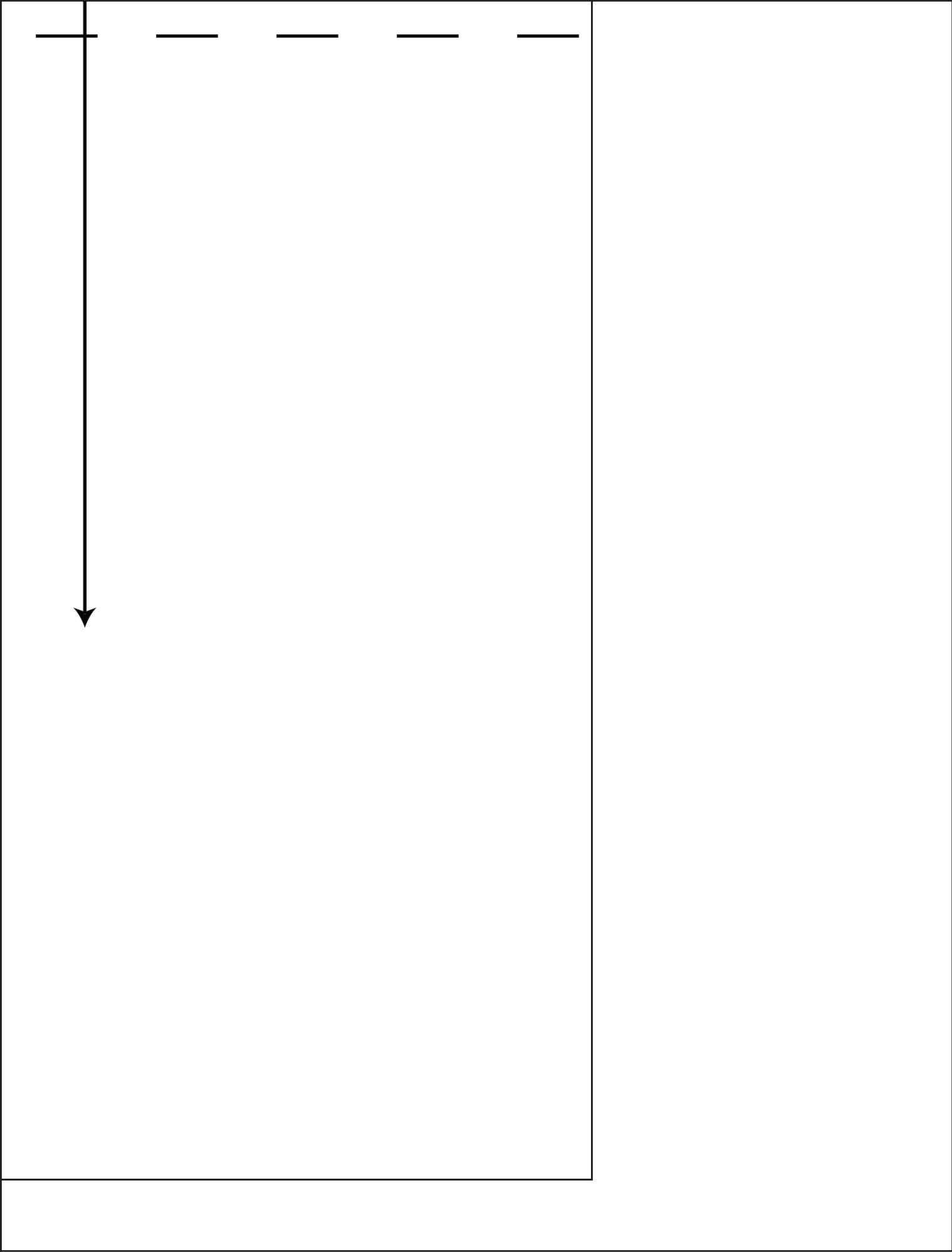


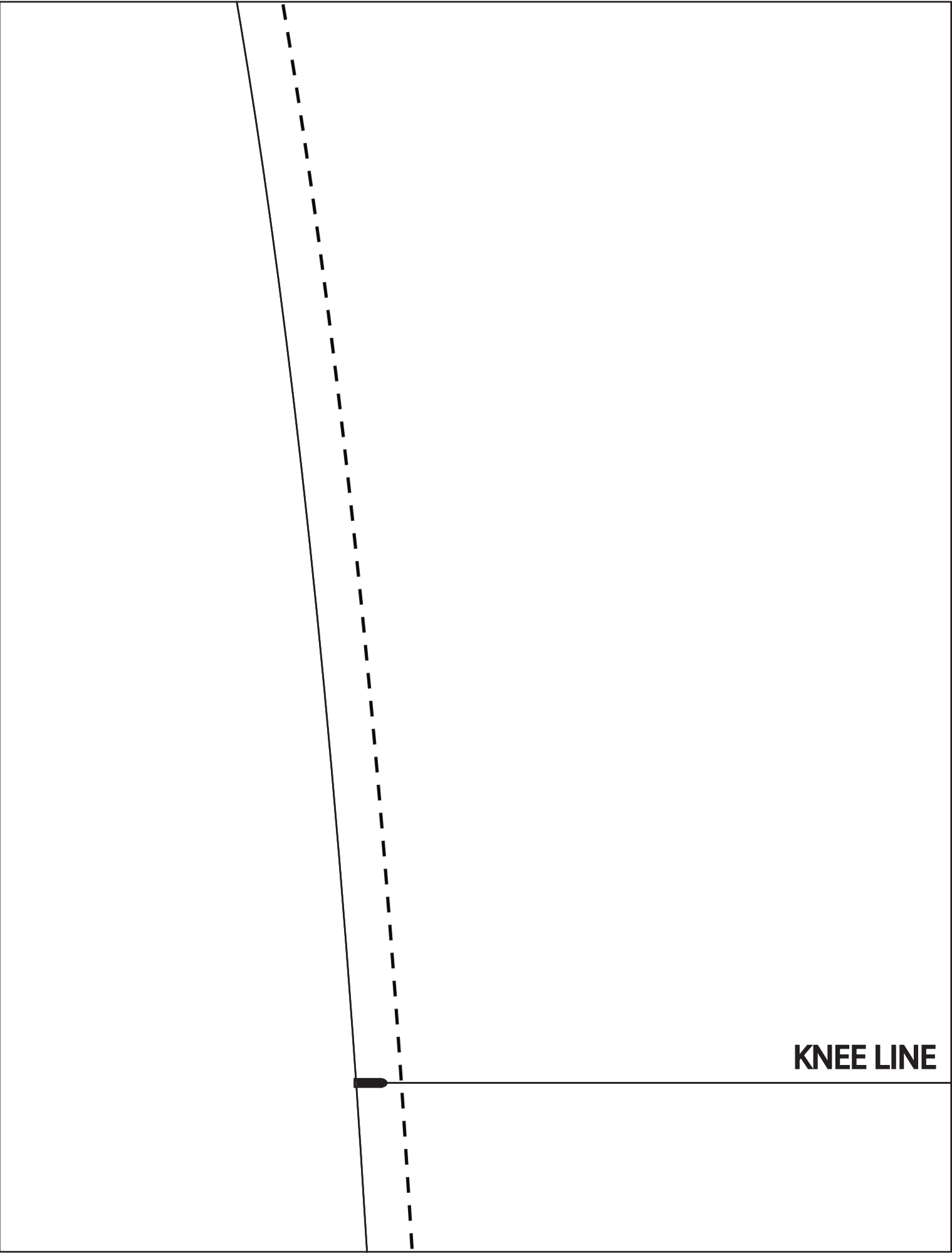


FRONT

CUT 2



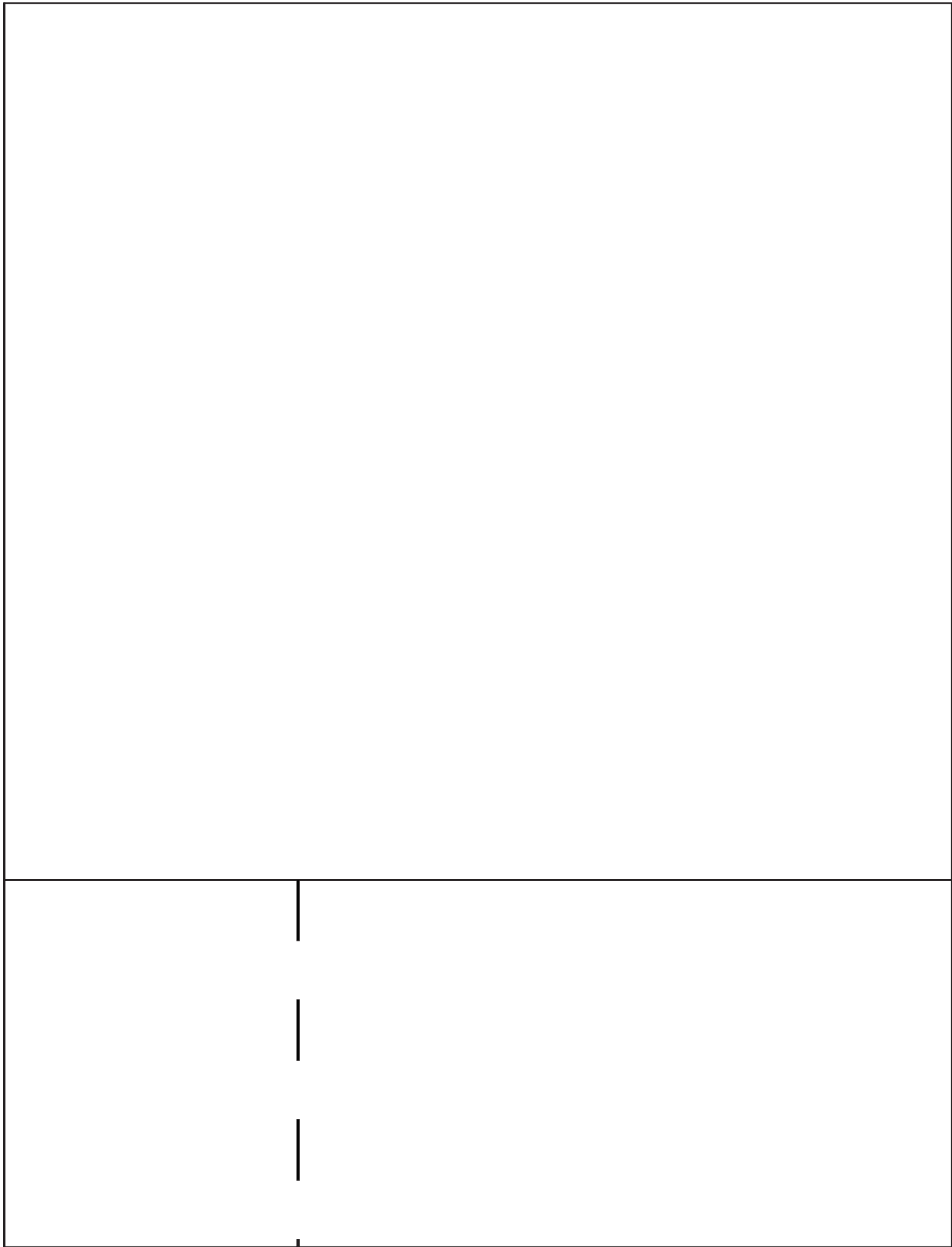


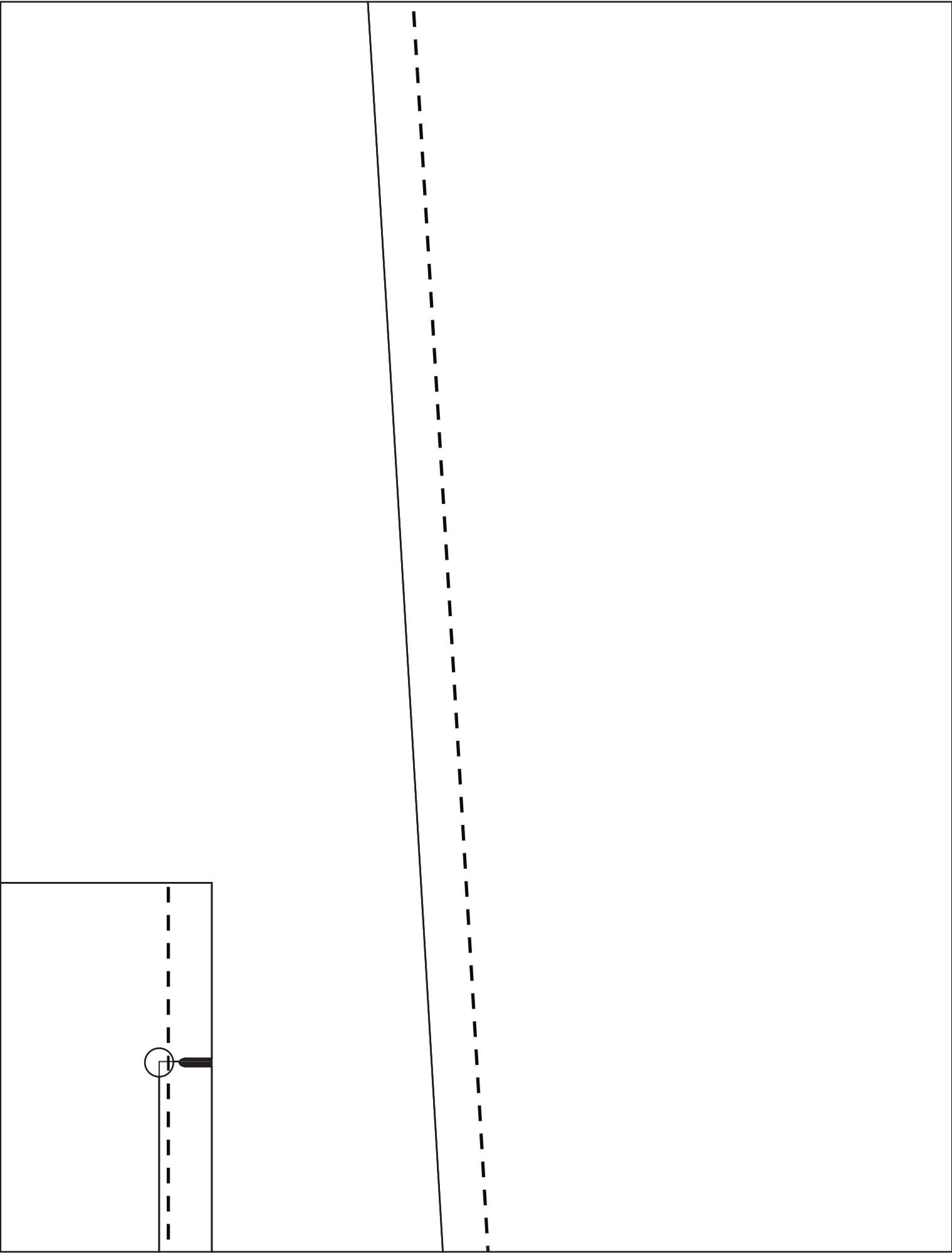


KNEE LINE

SIDE ZIPPER START





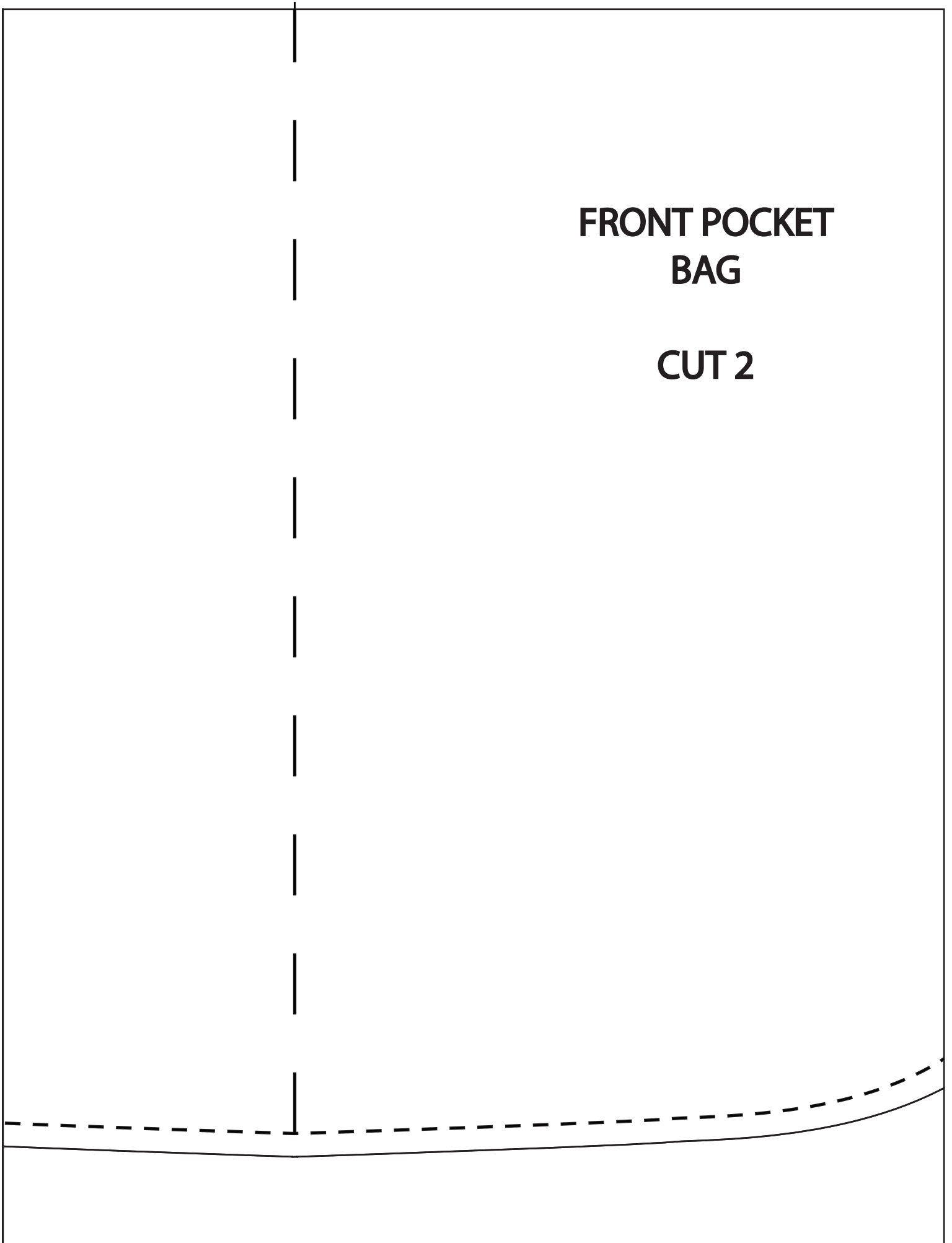


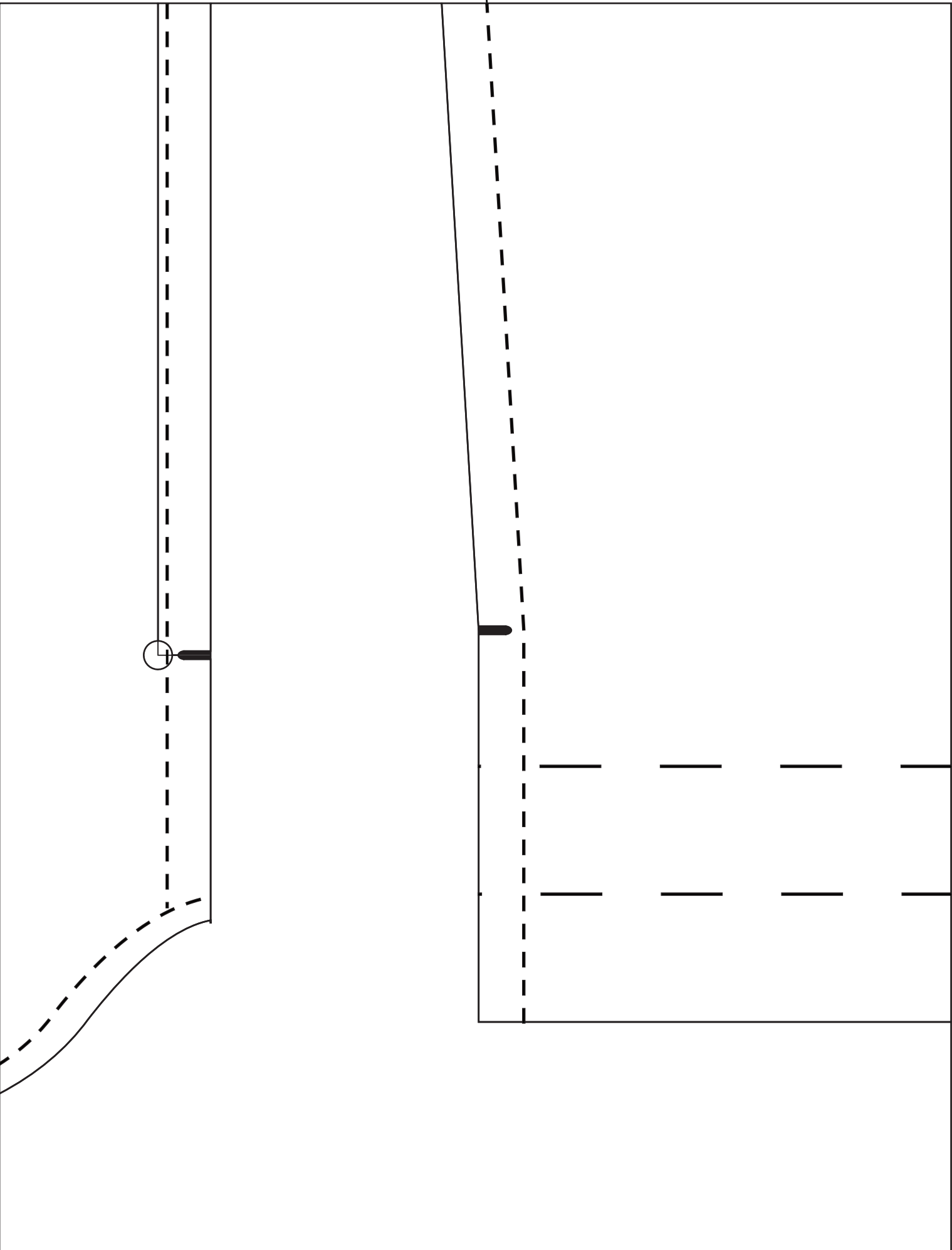
**SIDE ZIPPER REQUIRES
18", #3 CLOSE END NYLON
ZIPPER**



**FRONT POCKET
BAG**

CUT 2





SIDE ZIPPER END

