

A1

BACK WELT POCKET
BAG

CUT 2



A2



A3

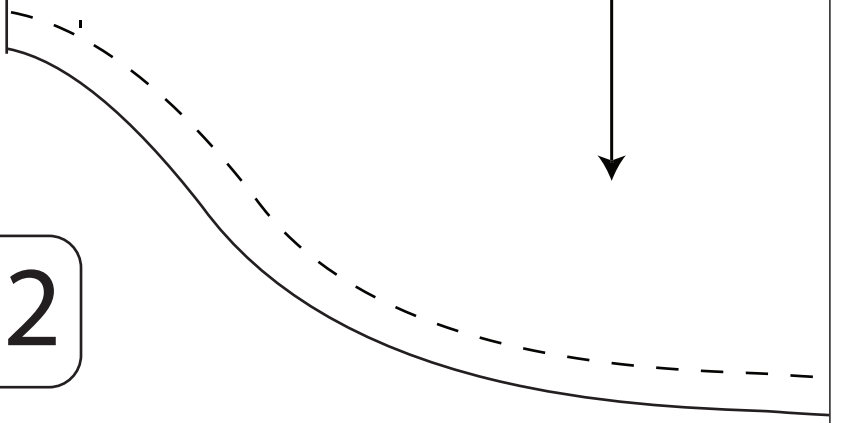
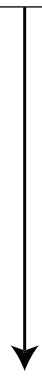
FRONT POCKET
BAG

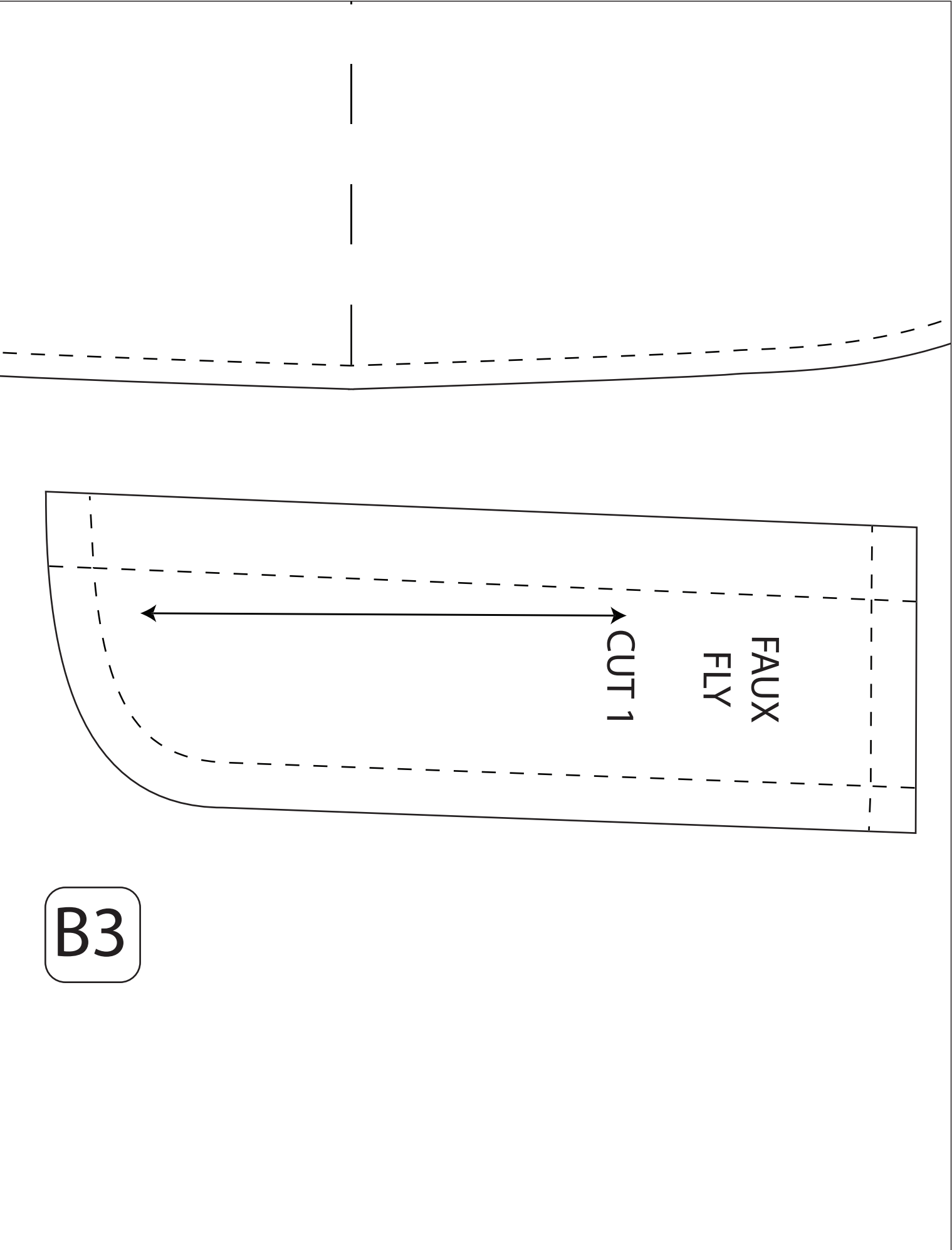
CUT 2

B1



B2





B3

FAUX
FLY

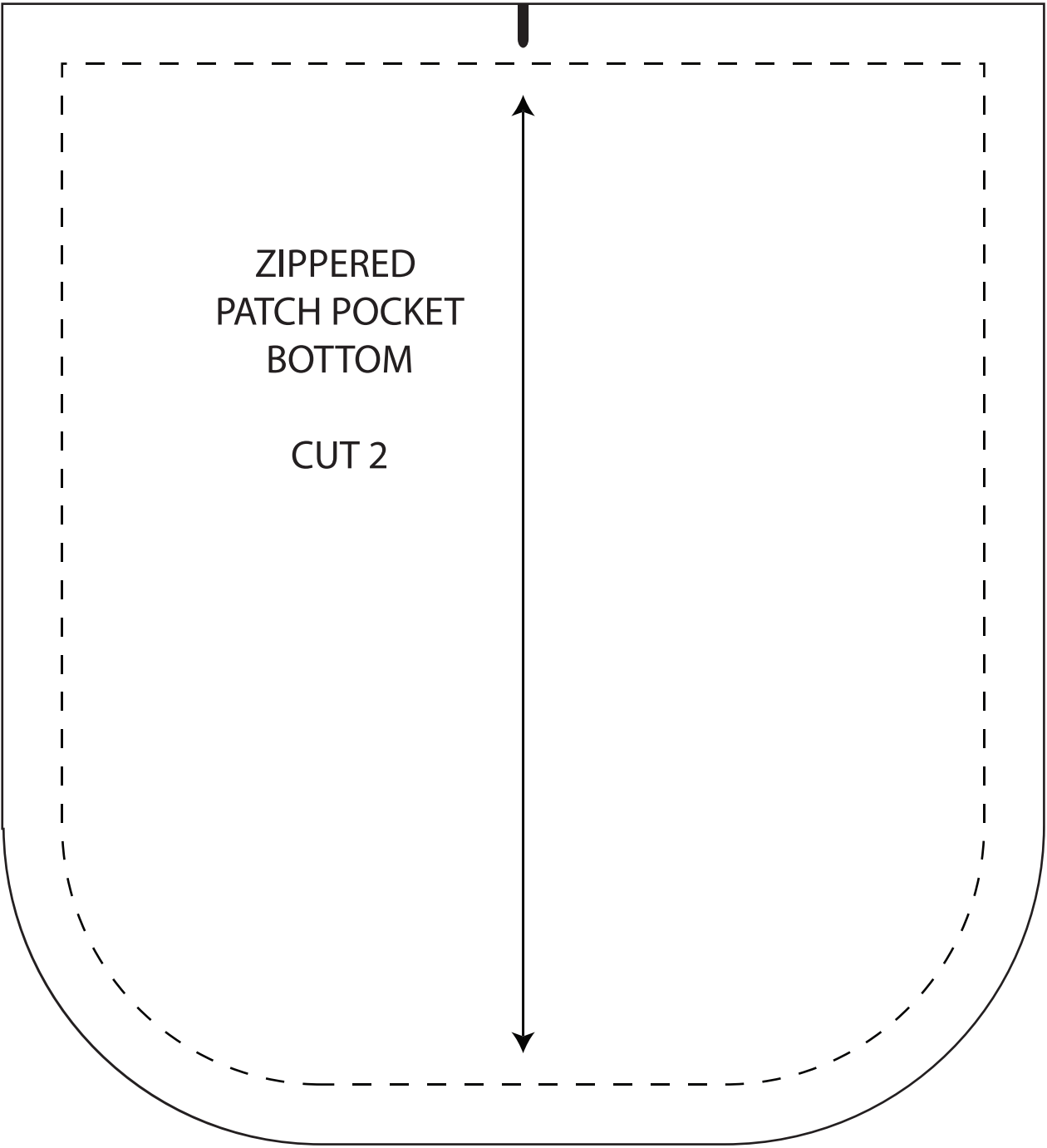
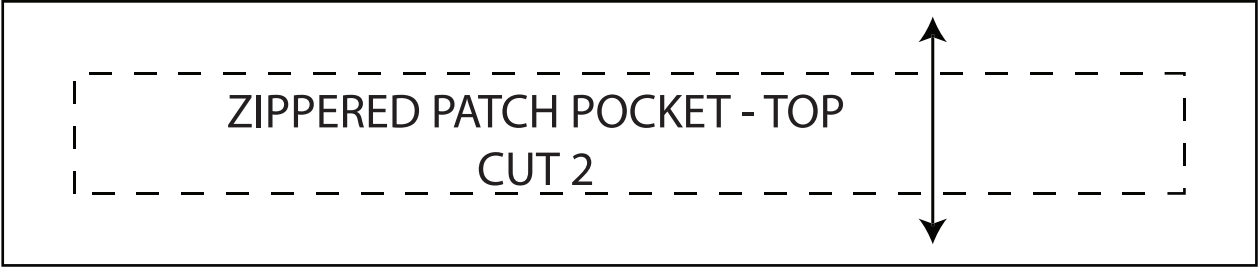
CUT 1

A4

SIDE
ZIPPER
SHIELDS

CUT 2





**BACKWELT POCKET
INTERFACING**

CUT 4



FAUX
FLY
INTERFACING

The diagram shows a pattern piece for 'FAUX FLY INTERFACING CUT 1'. It is a vertical rectangle with rounded corners at the bottom. To the left of the main piece, there is a curved line and a dashed line, possibly indicating a fold or a separate piece. To the right, there is a vertical line with a downward-pointing arrow, and a dashed line near the bottom.

CUT 1

B4

BACK WELT POCKET

CUT 2



